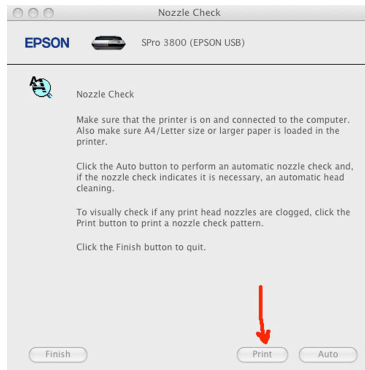


Epson 3800 Printer Instructions

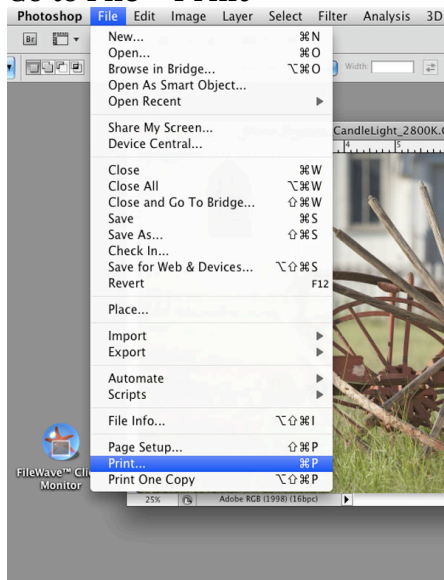
* Please note you will need to set-up a Print Account at the cage to print to the Epson 3800 printers.

1. Perform a “Nozzle Check” on your printer ... **Applications>Epson Printer Utility** before you make any prints. **Do this each time you print**, doing so does not cost you any money.

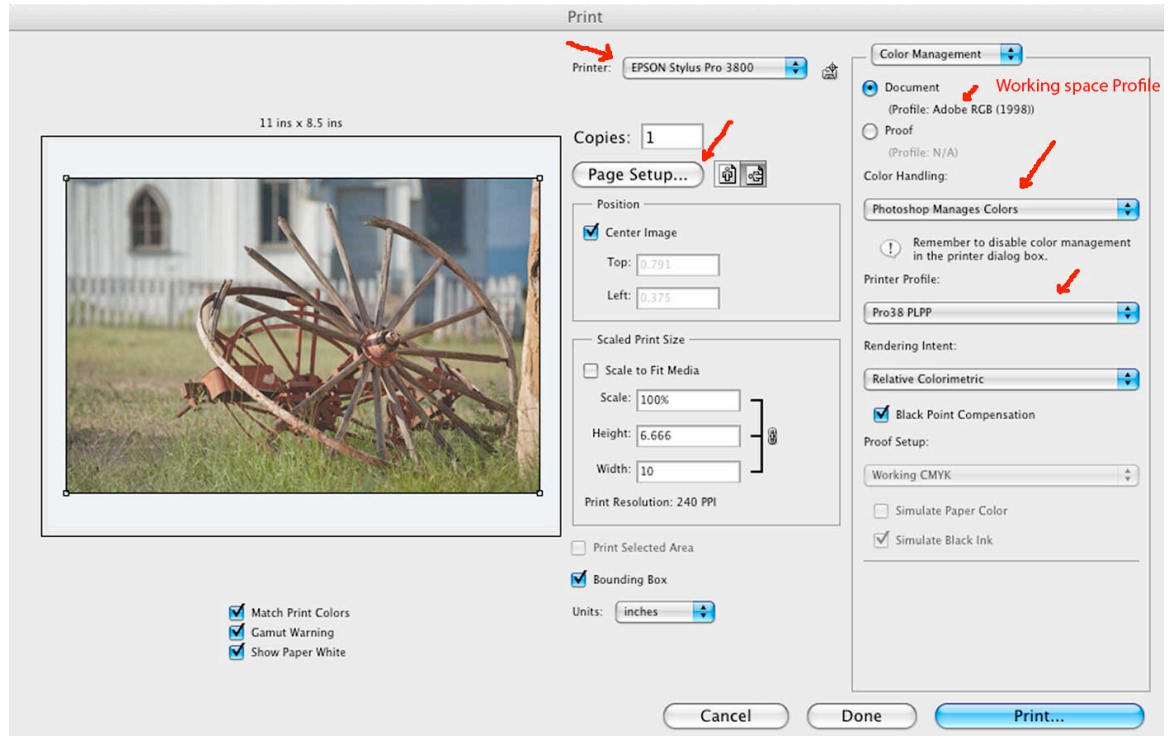


2. Open your finished/prepared file in Photoshop, make sure that the file has a working space profile attached!

3. Go to **File > Print**



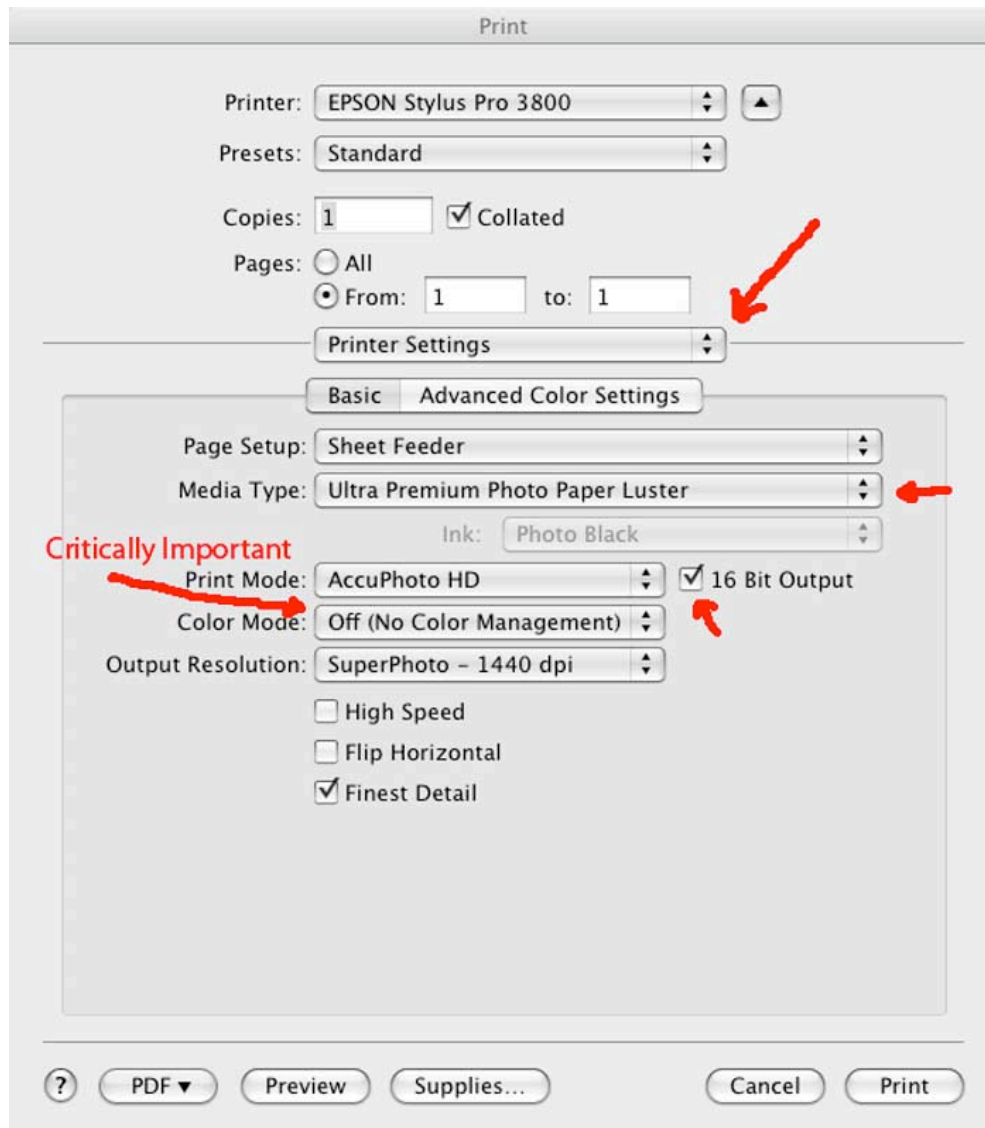
4. The following window will be displayed ...



- Select **Epson Stylus Pro 3800** as your printer.
- Click on **Page Setup** and select the correct page size and paper path for your printer (there are three different paper paths on the Epson 3800) ... see Epson 3800 Printer manual for details.
- Make sure that your image has a **Working Space Profile** as pictured. In this example it is **Adobe RGB (1998)**.
- Select **Photoshop Manages Color**
- The next item is critically important select the **BEST** printer/paper profile for the Epson printer and paper that you are using. Many Epson 3800 paper profiles are already installed on lab computers, **Pro38 PLPP** is the correct profile for *Epson Ultra Premium Photo Paper Luster*. Other paper profiles can be downloaded (for example Hahnemuhle) and installed on your computer for use. Here's the install path: HD>Users>Your user name>library>Çolorsync>Profiles.
- Start with the default rendering intent set to **Relative Colorimetric**. If your first print does not meet your expectations try a rendering intent set to **Perceptual**.

- Click on the **Print** button.

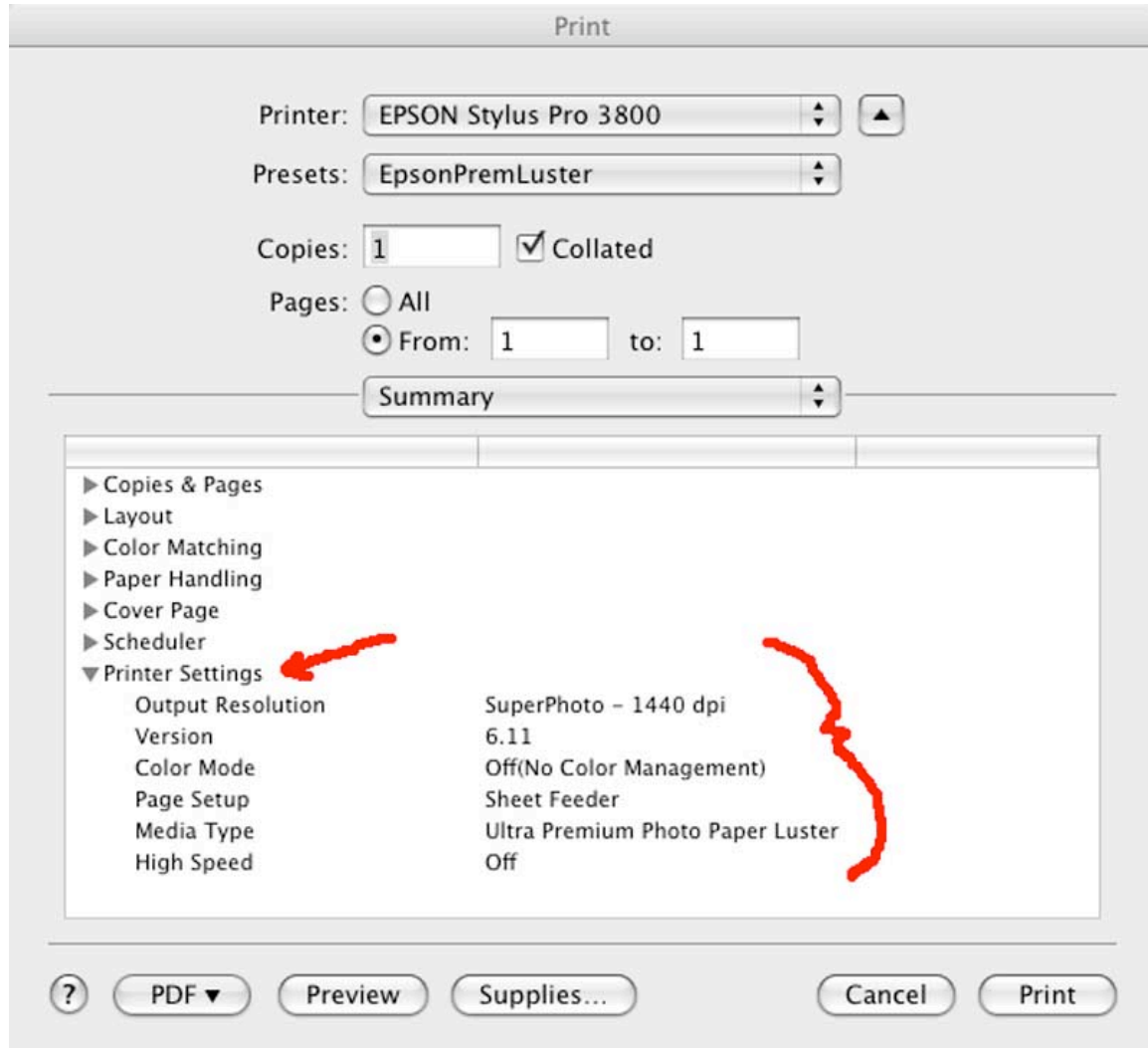
5. Here's the Epson driver window.



Your dialog box should look as follows after you select **Print Settings**:

- Set **Media Type** to the paper or closest type of paper you are using
- **Color Mode** should be **OFF (No Color Management)**
- Go to the **Printer Settings** pull down and select **Summary**.

6. Here's the Summary window ...



Make sure that the printer settings here match the previous dialog box before you press the **Print** button!

Troubleshooting:

1. Paper does not feed properly.

Make sure that you selected the proper paper path from the Page Set-up.

2. Print has vertical streaks on it or scraps in the printer as it is printing.

Make sure that the printers **Platten Gap** (see Epson Manual) is set correctly for the paper you are using. Thicker papers require a larger **Platten Gap**.

3. Print colors are off.

Make sure all of your settings are correct ... check dialog boxes. Did you do a Nozzle Check on the printer?

4. Printer runs out of ink.

Call or go to the 3rd floor cage (X-2682). They will have someone come and replace your ink.

5. Other Print or Print account problems.

Ask a Labbie or see a manager at the cage.